

TWO FILES

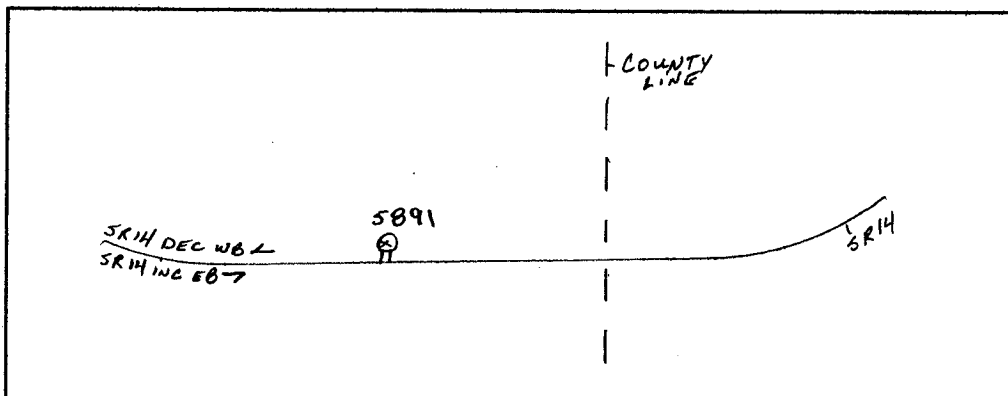
Interval 60 min. 15 min.
 Binned(CL/SP) Count(volume)
 Lane No 1 2
 Direction Channel 1 _____
 Direction Channel 2 _____
 Data Hog # _____ 7060

Counter No. 165891 Count ID HPMS
 SR 14 RRT/RRQ MP 21.77
 Leg <-> Direction WB OSID _____

Station Description _ ON SR 14 at Clark / Skamania Co. Line

Date	Day	Time	Comments
4/14/08	2	14:25 1700	Manual (1) 3 (2) _____ Counter (1) 3 (2) _____ set cntr ok bj 6.4
4/15	3	08:13	Manual (1) 5 (2) _____ Counter (1) 5 (2) _____ cntr reset-blank screen- chk cntr ok bj 6.3
4/16	4	07:50	Manual (1) 9 (2) _____ Counter (1) 9 (2) _____ chk cntr ok bj 6.4
4/17	5	09:56	Manual (1) 5 (2) _____ Counter (1) 5 (2) _____ chk cntr ok bj 6.4
4/18	6	0935	Manual (1) / (2) _____ Counter (1) / (2) _____ P.U. cntr ok bj 6.5

Sketch



B. JOHNSON
Field Person



Interval 60 min. 15 min.
 Binned(CL/SP) Count(volume)
Lane No 1 2

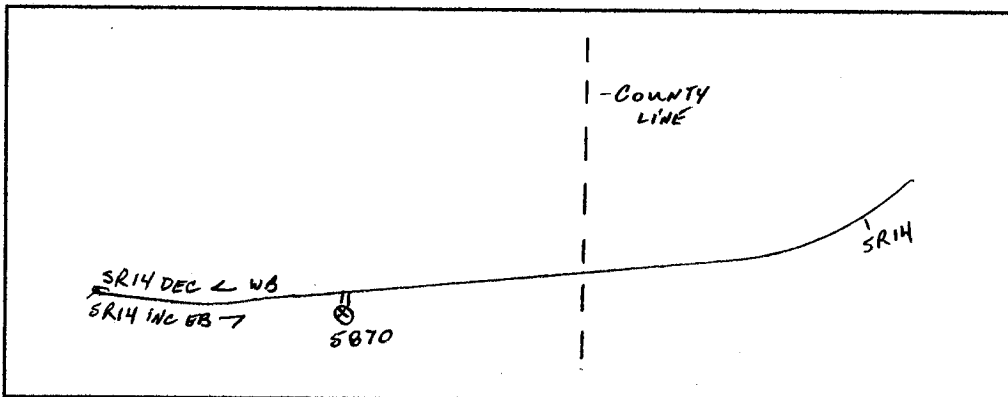
Direction Channel 1 _____
Direction Channel 2 _____
Data Hog # _____ 7060

Counter No. 165870 Count ID HPMS
SR 14 RRT/RRQ _____ MP 21.77
Leg <-> Direction EB OSID _____

Station Description _ ON SR 14 at Clark / Skamania Co. Line

Date	Day	Time	Comments
4/14/08	2	14:16	Manual (1) <u>2</u> (2) _____ Counter (1) <u>2</u> (2) _____ set cntr ok bj 6.4
4/15	3	08:07	Manual (1) <u>11</u> (2) _____ Counter (1) <u>11</u> (2) _____ chk cntr ok bj 6.3
4/16	4	07:46	Manual (1) <u>9</u> (2) _____ Counter (1) <u>9</u> (2) _____ chk cntr ok bj 6.4
4/17	5	09:50	Manual (1) <u>11</u> (2) _____ Counter (1) <u>11</u> (2) _____ chk cntr ok bj 6.6
4/18	6	0933	Manual (1) <u>'</u> (2) _____ Counter (1) <u>'</u> (2) _____ P.U. cntr ok bj 6.5

Sketch



B. JOHNSON
Field Person

STATE OF WASHINGTON - DEPARTMENT OF TRANSPORTATION
 TRIP SYSTEM
 HOURLY TRAFFIC CLASSIFICATION SUMMARY

SR 014	MP 021.77	OFF SYSTEM ID.	LEG	DIRECTION OF TRAFFIC	WESTBOUND	LANE ALL OF													
COUNT IDENTIFIER	HPMS	COUNTER NUMBER	165891	DESCRIPTION: ON SR 14 AT CLARK/SKAMANIA CO LINE															
04-15-08	TUESDAY	CARS PICKUPS	BUS	SINGLE MED	UNITS HVY	4+	SINGLE UNIT %	DOUBLE 4-	DOUBLE 5	DOUBLE 6+	DOUBLE UNIT %	5-	TRAINS 6	TRAINS 7+	TRAIN %	TRUCK %	CLASS UNKNOWN	TOTAL VEHICLES	
12 - 1	1	84		3	2		5.2	1	4	3	4.2		1	2	2.1	11.5	1	96	
11 - 11	10	90		3	1		4.0		4	3	6.9			2	3.1	10.9		101	
11 - 12	11	79		10			10.3		3	1	5.2			2		18.6		97	
PM HOURS																			
12 - 1	101		2	8	3		10.9		3	2	4.2			2	1.6	15.1		119	
1 - 2	107			8	1		7.2	2	3	2	5.6			3	3.4	14.4		125	
2 - 3	89		1	16	1		15.1		6	2	6.7	1		3	1.9	25.2		119	
3 - 4	128			10	1		7.8	2	4	1	5.8			3	4.3	15.6	2	154	
4 - 5	110			15	1		11.4	1	5	3	5.7	1		5		21.4		140	
5 - 6	117			13	3		11.4		4	2	5.0			1	1.3	16.4		140	
6 - 7	68			3			3.9		3	1	5.3			1	1.9	10.5		76	
7 - 8	45			5			9.3		3		5.6			1		16.7		54	
8 - 9	41			5			10.0	1	3		8.0					18.0		50	
9 - 10	26			1			10.0		3		10.0					13.3		30	
10 - 11	18			1			4.5		3		13.6					18.2		22	
11 - 12	6								1		14.3					14.3		7	
AM TOTAL	253			16	3		6.5	1	11	4	5.4			1	1.7	13.6		1	294
PM TOTAL	856		4	85	10		9.6	6	43	13	6.0	2		4	1.6	17.2		2	1036
DAY TOTAL	1109		4	101	13		8.9	7	54	17	5.9	2	1	19	1.7	16.4		3	1330
																2-AXLE EQUIVALENT			1511

SR 014 MP 021.77 OFF SYSTEM ID. LEG DIRECTION OF TRAFFIC WESTBOUND LANE ALL OF
 COUNT IDENTIFIER HPMS COUNTER NUMBER 165891 DESCRIPTION: ON SR 14 AT CLARK/SKAMANIA CO LINE

DAY	CARS PICKUPS	BUS	SINGLE MED	SINGLE UNIT %	DOUBLE 4-	DOUBLE 5	DOUBLE 6+	DOUBLE UNIT %	5-	TRAINS 6	TRAINS 7+	TRAIN %	TRUCK %	CLASS UNKNOWN	TOTAL VEHICLES
04-16-08	8														8
WEDNESDAY	3														3
AM HOURS	1														1
12 - 1	1														1
1 - 2	1														1
2 - 3	7	1	1	18.2	1	3	1	25.0							6
3 - 4	27			3.3		1	1	66.7							6
4 - 5	80			9.9		1	1	9.1							11
5 - 6	149			4.9		1	1	3.3							30
6 - 7	135			6.7		2	2	1.1							91
7 - 8	108			9.3		2	1	2.4							9.1
8 - 9	89			7.4		2	1	2.7							9.4
9 - 10	92			6.5		4	4	5.4							16.3
10 - 11	104			11.0		2	2	7.4							17.6
11 - 12						3	1	4.6							14.8
PM HOURS															18.1
12 - 1	89	2	9	10.7		2	3	4.7							18.8
1 - 2	106		14	10.9		1	1	4.5		1	3	3.6			16.4
2 - 3	116		19	14.6		1	1	2.3			4	3.1			16.4
3 - 4	129		12	10.2		2	3	7.3			4	3.1			21.9
4 - 5	137	2	10	7.8		5	3	5.7			3	1.9			17.8
5 - 6	154	1	12	6.9		4	1	7.2		1	2	1.8			16.9
6 - 7	106		4	4.2		5	2	4.0							10.9
7 - 8	62	1	3	6.9		1	6	5.0			1	1.4			9.2
8 - 9	54	1	3	6.1		3	2	4.2			1	1.4			12.5
9 - 10	37		3	10.6		5	3	7.6			3	4.5			18.2
10 - 11	16	1	4	11.5		6	2	10.6							21.3
11 - 12	6		1	12.5		1	1	26.9							38.5
AM TOTAL	803	2	63	7.6	7	22	13	4.5	3	3	13	1.7		3	935
PM TOTAL	1012	8	94	9.1	13	41	20	6.0	1	1	16	1.5		10	1226
DAY TOTAL	1815	10	157	8.5	20	63	33	5.4	4	1	29	1.6		13	2161
2-AXLE EQUIVALENT 2431															

04-17-08 THURSDAY AM HOURS	CARS PICKUPS	BUS	SINGLE MED	SINGLE UNITS 4+	SINGLE UNIT %	DOUBLE UNITS 4-	DOUBLE UNITS 5	DOUBLE UNITS 6+	DOUBLE UNIT %	5-	TRAINS 6	TRAINS 7+	TRAIN %	TRUCK %	CLASS UNKNOWN	TOTAL VEHICLES
1	5		1		11.1		1		33.3							9
2	2				25.0				25.0							4
3	10															2
4	22		1		3.8		2		7.7	1		1	9.1		9	
5	75		4		4.8		2		1.2			3	3.8		11	
6	140		5		3.9		3		2.6	2		3	3.6		26	
7	150		5		3.1		1		3.1			1	1.9		84	
8	103		13		12.1		2		4.0			3	1.8		155	
9	106		5		4.7		2		8.7			1	.8		163	
10	74		11		12.5		4		8.3			4	3.1		124	
11	106		11		11.0		3		4.7			2	2.1		127	
12	106		12		8.6		5		10.0			1	.8		127	
1	109		10		5.9		10		7.9			5	3.6		140	
2	124		8		14.4		5		7.9			7	4.6		152	
3	125		20		12.7		2		2.6			1	.7		153	
4	167		21		9.1		4		3.9			3	1.5		204	
5	168		18		3.2		3		4.6			2	1.0		197	
6	145		5		6.1		5		4.4			1	.6		197	
7	106		7		7.2		1		.9			1	7.0		158	
8	88		7		5.7		2		2.1				9.3		114	
9	92		6		6.9		6		7.5				13.2		97	
10	25		4		12.5		2		3.4				10.3		106	
11	11		2		7.0		3		13.3				16.7		58	
12	11				8.3		2		18.8				31.3		30	
AM TOTAL	795		57		7.0		23		5.0			3	2.0		3	928
PM TOTAL	1212		108		8.3		45		5.2			1	1.4		1	1425
DAY TOTAL	2007		165		7.8		68		5.1			3	1.7		4	2353
2-AXLE EQUIVALENT																
2640																

SR 014 MP 021.77 OFF SYSTEM ID. LEG DESCRIPTION: ON SR 14 AT CLARK/SKAMANIA CO LINE LANE ALL OF
 COUNT IDENTIFIER HPMS COUNTER NUMBER 165891 DIRECTION OF TRAFFIC WESTBOUND

04-18-08	CARS PICKUPS	BUS MED	SINGLE UNITS HVY	4+	SINGLE UNIT %	DOUBLE UNITS 4-	5	6+	DOUBLE UNIT %	5-	TRAINS 6	7+	TRAIN %	TRUCK %	CLASS UNKNOWN	TOTAL VEHICLES
FRIDAY	6	2	1	1	20.0	1	1	1	12.5	1	1	1	12.5	25.0	33.3	8
AM HOURS	1	2	3	3	18.8	1	1	1	33.3	1	1	1	20.0	60.0	33.3	5
12 - 1	2	13	3	3	14.3	1	1	1	20.0	1	1	1	19.0	18.8	33.3	3
1 - 2	2	17	3	3	14.3	1	1	1	4.8	1	1	1	1.2	19.0	60.0	16
2 - 3	2	17	3	3	14.3	1	1	1	6.0	1	1	1	1.2	19.0	60.0	21
3 - 4	2	17	3	3	14.3	1	1	1	6.0	1	1	1	1.2	19.0	60.0	21
4 - 5	2	17	3	3	14.3	1	1	1	6.0	1	1	1	1.2	19.0	60.0	21
5 - 6	2	17	3	3	14.3	1	1	1	6.0	1	1	1	1.2	19.0	60.0	21
6 - 7	2	17	3	3	14.3	1	1	1	6.0	1	1	1	1.2	19.0	60.0	21
7 - 8	2	17	3	3	14.3	1	1	1	6.0	1	1	1	1.2	19.0	60.0	21
8 - 9	2	17	3	3	14.3	1	1	1	6.0	1	1	1	1.2	19.0	60.0	21
9 - 10	2	17	3	3	14.3	1	1	1	6.0	1	1	1	1.2	19.0	60.0	21
10 - 11	2	17	3	3	14.3	1	1	1	6.0	1	1	1	1.2	19.0	60.0	21
11 - 12	2	17	3	3	14.3	1	1	1	6.0	1	1	1	1.2	19.0	60.0	21
PM HOURS	99	16	1	1	13.7	4	4	3	3.2	1	3	3	2.4	19.4	13.4	149
12 - 1	1	1	1	1	8.2	1	1	1	3.4	1	1	1	0.7	9.7	13.4	136
1 - 2	1	1	1	1	8.2	1	1	1	3.4	1	1	1	0.7	9.7	13.4	136
2 - 3	1	1	1	1	8.2	1	1	1	3.4	1	1	1	0.7	9.7	13.4	136
3 - 4	1	1	1	1	8.2	1	1	1	3.4	1	1	1	0.7	9.7	13.4	136
4 - 5	1	1	1	1	8.2	1	1	1	3.4	1	1	1	0.7	9.7	13.4	136
5 - 6	1	1	1	1	8.2	1	1	1	3.4	1	1	1	0.7	9.7	13.4	136
6 - 7	1	1	1	1	8.2	1	1	1	3.4	1	1	1	0.7	9.7	13.4	136
7 - 8	1	1	1	1	8.2	1	1	1	3.4	1	1	1	0.7	9.7	13.4	136
8 - 9	1	1	1	1	8.2	1	1	1	3.4	1	1	1	0.7	9.7	13.4	136
9 - 10	1	1	1	1	8.2	1	1	1	3.4	1	1	1	0.7	9.7	13.4	136
10 - 11	1	1	1	1	8.2	1	1	1	3.4	1	1	1	0.7	9.7	13.4	136
11 - 12	1	1	1	1	8.2	1	1	1	3.4	1	1	1	0.7	9.7	13.4	136
AM TOTAL	462	50	2	2	9.6	11	6	7	3.5	1	7	7	1.5	14.5	2	543
PM TOTAL	462	50	2	2	9.6	11	6	7	3.5	1	7	7	1.5	14.5	2	543
DAY TOTAL	462	50	2	2	9.6	11	6	7	3.5	1	7	7	1.5	14.5	2	543

04-14-08 THRU 04-18-08

AVERAGE WEEKDAY CLASSIFICATION VOLUMES *****

CARS PICKUPS	BUS MED	SINGLE UNITS HVY	4+	SINGLE UNIT %	DOUBLE UNITS 4-	5	6+	DOUBLE UNIT %	5-	TRAINS 6	7+	TRAIN %	TRUCK %	CLASS UNKNOWN	TOTAL VEHICLES
1911	7	161	14	8.1	20	66	33	5.3	4	1	32	1.6	15.0	9	2257
TOTAL HOURS FOR COUNT 75															
2 DAYS															
AVG WEEKDAY VOL 2257 X SEASONAL ADJ. FACTOR 1.0000 = ESTIMATED AVG DAILY TRAFFIC 2257															
FACTOR GROUP P07															
AWD 2-AXLE EQUIVALENT															

STATE OF WASHINGTON - DEPARTMENT OF TRANSPORTATION
 TRIP SYSTEM
 HOURLY TRAFFIC CLASSIFICATION SUMMARY

SR 014 MP 021.77 OFF SYSTEM ID. LEG DIRECTION OF TRAFFIC EASTBOUND LANE ALL OF

COUNT IDENTIFIER HPMS COUNTER NUMBER 165870 DESCRIPTION: ON SR 14 AT CLARK/SKAMANIA CO LINE

04-14-08	CARS PICKUPS	BUS	SINGLE MED	HVY	4+	SINGLE UNIT %	DOUBLE 4-	5	6+	DOUBLE UNIT %	5-	6	7+	TRAIN %	TRUCK %	CLASS UNKNOWN	TOTAL VEHICLES
MONDAY	152		6	1		4.1	1	6	2	5.3			1	1.6	10.0		170
AM HOURS	179		12		3	7.4	1	4	1	2.5		1	2	1.5	11.3		203
1 - 2	157		6			4.0		7	1	4.6			2	1.1	9.8		174
2 - 3	109	1	12		1	9.9	1	4	1	4.6			2	1.5	16.0	1	131
3 - 4	89		2			4.2		1	1	2.1			1	1.0	7.3		96
4 - 5	50	1	1			1.8	1	3		7.3					9.1		55
5 - 6	33		2			5.6		1		2.8					8.3		36
6 - 7	26		1			3.4	1	1		6.9					10.3		29
7 - 8	19												2	9.5	9.5		21
8 - 9																	
9 - 10																	
10 - 11																	
11 - 12																	
PM HOURS																	
1 - 2																	
2 - 3																	
3 - 4																	
4 - 5																	
5 - 6																	
6 - 7																	
7 - 8																	
8 - 9																	
9 - 10																	
10 - 11																	
11 - 12																	
AM TOTAL	814	2	42	4	2	5.5	5	27	5	4.0		1	10	1.2	10.7		915
PM TOTAL	814	2	42	4	2	5.5	5	27	5	4.0		1	10	1.2	10.7	3	915
DAY TOTAL	814	2	42	4	2	5.5	5	27	5	4.0		1	10	1.2	10.7	3	915
																	1002

2-AXLE EQUIVALENT

04-16-08	HEDNESDAY	CARS PICKUPS	BUS	SINGLE MED	SINGLE HVY	SINGLE 4+	SINGLE UNIT %	DOUBLE 4-	DOUBLE 5	DOUBLE 6+	DOUBLE UNIT %	5-	TRAINS 6	TRAINS 7+	TRAIN %	TRUCK %	CLASS UNKNOWN	TOTAL VEHICLES	
12 - 1	5	4	2	1	1	1	11.1	1	1	1	11.1	1	1	1	22.2	44.4		9	
1 - 2	8	8	3	2	1	1	25.0	1	1	1	25.0	1	1	1	22.2	50.0		8	
2 - 3	18	18	2	2	1	1	11.1	1	1	1	11.1	1	1	1	7.1	11.1		9	
3 - 4	50	50	2	2	1	1	4.0	1	1	1	4.0	1	1	1	7.1	11.1		14	
4 - 5	62	62	3	3	1	1	3.4	1	1	1	3.4	1	1	1	12.0	28.0		25	
5 - 6	72	72	3	3	1	1	5.7	1	1	1	5.7	1	1	1	1.4	13.8		58	
6 - 7	83	83	1	1	1	1	16.8	1	1	1	16.8	1	1	1	1.1	11.4		70	
7 - 8	84	84	1	1	1	1	16.0	2	2	2	10.9	2	1	1	1.1	24.2		95	
8 - 9	62	62	1	1	1	1	10.1	2	2	2	8.3	2	1	1	3.4	30.3		119	
9 - 10	77	77	1	1	1	1	10.9	3	3	3	16.3	3	2	2	4.6	22.9		109	
10 - 11	99	99	1	1	1	1	9.1	5	5	4	9.1	4	4	4	3.3	30.4	2	92	
11 - 12	93	93	10	10	2	2	9.4	2	9	2	10.2	4	4	4	4.0	22.2		99	
12 - 1	102	102	13	13	2	2	11.4	3	8	2	15.2	4	4	4	3.1	22.7		128	
1 - 2	147	147	8	8	2	2	6.5	1	9	1	8.9	3	3	3	3.0	29.5		132	
2 - 3	178	178	2	2	1	1	6.6	1	5	1	3.6	1	1	1	2.4	17.7	1	124	
3 - 4	146	146	1	1	1	1	5.5	1	4	4	4.0	1	1	1	1.5	10.8		166	
4 - 5	132	132	1	1	1	1	6.1	1	5	1	3.7	1	1	1	1.5	11.0		200	
5 - 6	87	87	1	1	1	1	4.2	2	2	1	2.1	1	1	2	1.2	11.0		164	
6 - 7	70	70	1	1	1	1	6.3	2	2	1	2.1	1	1	2	1.4	7.7		143	
7 - 8	25	25	4	4	1	1	6.1	1	6	1	7.3	1	1	1	1.2	8.4		95	
8 - 9	59	59	4	4	1	1	6.1	1	6	1	7.3	1	1	1	1.2	14.6		82	
9 - 10	14	14	1	1	1	1	6.3	1	1	1	3.8	1	1	1	1.5	7.6	2	66	
10 - 11	533	533	1	67	10	3	11.5	9	32	26	9.5	2	3	19	3.4	24.3		707	
11 - 12	1152	1152	4	79	6	3	6.6	7	52	19	5.8	2	2	16	1.5	13.9		1342	
AM TOTAL	1685	1685	5	146	16	3	8.3	16	84	45	7.1	4	5	35	2.1	17.5		2049	
PM TOTAL																	2-AXLE EQUIVALENT	5	2396

STATE OF WASHINGTON - DEPARTMENT OF TRANSPORTATION
 TRIP SYSTEM
 HOURLY TRAFFIC CLASSIFICATION SUMMARY

SR 014 MP 021.77 OFF SYSTEM ID. LEG DIRECTION OF TRAFFIC BOTH WAYS LANE ALL OF

COUNT IDENTIFIER HPMS COUNTER NUMBER 165870 DESCRIPTION: ON SR 14 AT CLARK/SKAMANIA CO LINE

04-14-08 MONDAY AM HOURS	CARS PICKUPS	BUS MED	SINGLE UNITS HVY	4+	SINGLE UNIT %	DOUBLE UNITS 4-	5	6+	DOUBLE UNIT %	5-	TRAINS 6	7+	TRAIN %	TRUCK %	CLASS UNKNOWN	TOTAL VEHICLES
12 - 1																
1 - 2																
2 - 3																
3 - 4																
4 - 5																
5 - 6																
6 - 7																
7 - 8																
8 - 9																
9 - 10																
10 - 11																
11 - 12																
PM HOURS																
12 - 1																
1 - 2																
2 - 3																
3 - 4	291		12	3	4.7	1	8	2	3.4			3	.9	9.0	1	321
4 - 5	299		18	5	6.7	2	8	5	4.4		1	5	1.7	12.8	1	344
5 - 6	184	1	7		3.9		8	1	4.4			2	1.0	9.4		203
6 - 7																
7 - 8																
8 - 9																
9 - 10																
10 - 11																
11 - 12																
AM TOTAL	774	1	37	8	5.3	3	24	8	4.0		1	10	1.3	10.6	2	868
PM TOTAL	774	1	37	8	5.3	3	24	8	4.0		1	10	1.3	10.6	2	868
DAY TOTAL	774	1	37	8	5.3	3	24	8	4.0		1	10	1.3	10.6	2	868

2-AXLE EQUIVALENT 954																

COUNT IDENTIFIER HPMS COUNTER NUMBER 165870

04-15-08	CARS PICKUPS	BUS	SINGLE MED	UNITS HVY	4+	SINGLE UNIT %	DOUBLE 4-	UNITS 5	DOUBLE 6+	DOUBLE UNIT %	5-	TRAINS 6	TRAINS 7+	TRAIN %	TRUCK %	CLASS UNKNOWN	TOTAL VEHICLES
TUESDAY	141	2	10	4	1	7.7	2	8	5	8.3	1	1	8	5.0	21.0	2	181
AM HOURS	149	1	6	2	1	4.8	2	15	10	14.4	1	1	2	1.6	20.7	5	188
PM HOURS	143	1	16	1	1	9.6	2	10	2	7.9	1	1	3	2.2	19.7	1	178
12 - 1	184	2	16	4	1	9.6	1	12	4	7.5	1	1	5	2.2	19.3	1	228
1 - 2	179	1	17	3	1	9.2	2	7	2	5.1	1	1	6	3.2	17.5	1	217
2 - 3	192	1	25	4	1	12.0	1	12	3	6.4	1	3	8	4.8	23.1	2	251
3 - 4	265	2	18	1	1	6.7	3	13	4	6.4	1	1	4	1.6	14.7	1	313
4 - 5	311	3	31	1	1	8.7	2	8	6	4.4	1	1	6	1.9	15.0	1	367
5 - 6	259	1	20	3	1	7.7	7	7	2	4.7	1	1	2	.3	12.8	1	298
6 - 7	184	1	13	1	1	6.7	6	7	1	3.8	1	1	2	1.0	12.7	1	208
7 - 8	117	1	6	1	1	4.5	1	4	1	6.0	1	1	3	2.2	11.5	1	134
8 - 9	105	1	8	1	1	6.8	1	4	1	4.2	1	1	2	1.0	11.0	1	118
9 - 10	76	1	1	1	1	1.2	1	4	1	6.1	1	1	1	9.4	7.3	1	82
10 - 11	45	1	3	1	1	5.7	1	4	1	9.4	1	1	1	15.1	15.1	1	53
11 - 12	27	1	1	1	1	3.4	1	1	1	3.4	1	1	1	6.9	6.9	1	29
AM TOTAL	433	32	7	1	1	7.3	6	33	17	10.2	2	3	13	2.9	20.5	2	547
PM TOTAL	1944	159	17	1	1	7.9	11	86	29	5.5	2	5	35	1.8	15.2	5	2298
DAY TOTAL	2377	191	24	1	1	7.8	17	119	46	6.4	2	8	48	2.0	16.2	7	2845

2-AXLE EQUIVALENT 7 2845 3285

SR 014 MP 021.77 OFF SYSTEM ID. COUNTER NUMBER 165870 LEG DESCRIPTION: ON SR 14 AT CLARK/SKAMANIA CO LINE LANE ALL OF

COUNT IDENTIFIER	HPMS	CARS PICKUPS	BUS MED	SINGLE UNITS HVY	4+	SINGLE UNIT %	DOUBLE UNITS			5-	TRAINS			TRAIN %	TRUCK %	CLASS UNKNOWN	TOTAL VEHICLES
							4-	5	6+		6	7+	8				
04-16-08																	
WEDNESDAY																	
AM HOURS																	
12 -		13	1			5.9								23.5			17
1 -		7	2			16.7								41.7			12
2 -		9				24.0								35.3			15
3 -		15				7.3								8.0			25
4 -		45	1			7.3	1							3.6			55
5 -		130				5.1								4.7			149
6 -		207				10.7								3.0			234
7 -		211				12.5								4.1			244
8 -		191				8.5								7.8			248
9 -		173	1			8.5								10.0			217
10 -		154				10.2								6.6			200
11 -		181				10.0								7.5			226
PM HOURS																	
12 -		188	2			10.0								8.8			240
1 -		199				11.2								8.0			260
2 -		218				10.9								4.6			275
3 -		276	4			8.4								5.5			323
4 -		315	1			6.6								3.8			366
5 -		300				6.5								3.4			338
6 -		238	2			4.2								3.0			262
7 -		149	1			6.6								5.3			167
8 -		124	1			6.1								7.4			148
9 -		96	1			8.0								15.4			113
10 -		41				8.3								8.3			52
11 -		20				9.3								5.9			24
AM TOTAL		1336	3			7.8								6.6			1642
PM TOTAL		2164	12			8.4								5.9			2568
DAY TOTAL		3500	15			8.4								6.2			4210
2-AXLE EQUIVALENT																	

STATE OF WASHINGTON - DEPARTMENT OF TRANSPORTATION
TRIP SYSTEM
HOURLY TRAFFIC CLASSIFICATION SUMMARY

SR 014 MP 021.77 OFF SYSTEM ID. LEG DIRECTION OF TRAFFIC BOTH WAYS LANE ALL OF

COUNT IDENTIFIER HPMS COUNTER NUMBER 165870 DESCRIPTION: ON SR 14 AT CLARK/SKAMANIA CO LINE

DAY	CARS PICKUPS	BUS MED	SINGLE HVY	4+	SINGLE UNIT %	DOUBLE 4-	DOUBLE 5	DOUBLE 6+	DOUBLE UNIT %	5-	TRAINS 6	TRAINS 7+	TRAIN %	TRUCK %	CLASS UNKNOWN	TOTAL VEHICLES
04-17-08	16		1		4.5		2	3	22.7			1	5.9	27.3		22
THURSDAY	10		1		11.8		4	3	23.5			1	5.9	41.2		17
AM HOURS	6				14.3			1	5.3			2	5.3	10.5		19
1 -	17				6.7		4	2	6.7			2	3.3	16.7		60
2 -	50				5.0		5	3	2.1			5	3.6	10.7		140
3 -	124				5.6		5	2	5.6			2	1.7	12.9		232
4 -	200				8.1		2	3	4.1			1	1.5	13.7		270
5 -	233				14.3		2	6	6.8			1	1.1	22.2		266
6 -	207				9.6		4	10	9.2			1	2.7	21.5		261
7 -	205				9.9		5	8	9.9			1	1.9	21.7		212
8 -	215				11.0		2	13	7.4			1	2.6	21.0		272
9 -	208				8.0		6	20	11.7			10	3.6	23.4		274
10 -	226				5.7		6	13	8.9			12	4.6	19.2		281
11 -	264				9.6		9	4	4.2			4	1.6	15.3		313
12 -	330				9.9		11	8	4.5			5	1.3	15.8		392
1 -	364				7.6		5	9	4.5			4	1.4	13.5		421
2 -	314				13		4	7	3.8			2	.9	8.5		343
3 -	241				5.6		4	5	4.5			1	.5	10.1		268
4 -	169				4.9		2	7	3.2			1	8.6	8.6		185
5 -	156				4.5		8	8	6.8			1	11.3	11.3		177
6 -	103				5.9		7	5	6.7			1	13.4	13.4		119
7 -	60				5.3		5	3	8.7			1	11.6	11.6		69
8 -	31				5.3		3	1	13.2			1	18.4	18.4		38
9 -	1449				9.2		21	55	7.0			30	2.1	18.3		1778
10 -	2466				6.7		28	105	5.9			40	1.6	14.2		2880
PM TOTAL	3915				7.7		49	160	6.3			70	1.8	15.8		4658
DAY TOTAL	10	316	29	2										2-AXLE EQUIVALENT	9	5332

SR 014 MP 021.77 OFF SYSTEM ID. LEG DIRECTION OF TRAFFIC BOTH WAYS LANE ALL OF
COUNT IDENTIFIER HPMS COUNTER NUMBER 165870 DESCRIPTION: ON SR 14 AT CLARK/SKAMANIA CO LINE

04-18-08	CARS PICKUPS	BUS MED	SINGLE UNITS 4+	SINGLE UNIT %	DOUBLE UNITS 4-	DOUBLE UNITS 5	DOUBLE UNITS 6+	DOUBLE UNIT %	5-	TRAINS 6	TRAINS 7+	TRAIN %	TRUCK %	CLASS UNKNOWN	TOTAL VEHICLES
FRIDAY AM HOURS	18	1	1	4.2		3	1	16.7			1	4.2	25.0		24
12 - 1	10					2		16.7					16.7		12
1 - 2	12		1	6.7				6.7			1	6.7	20.0		15
2 - 3	23		7	23.3				23.3					23.3		30
3 - 4	44		11.1	11.1				7.4					18.5		54
4 - 5	136		4	3.2		4		7.7			1	6	11.6		155
5 - 6	186		1	8.8		1		2.3			3	1.9	13.0		216
6 - 7	224		18	8.3		1		5.7		1	3	1.1	15.1		265
7 - 8	202		22	12.8		3		4.0		1	2	1.1	18.8		250
8 - 9			27			6					4	2.0			
9 - 10			4												
10 - 11															
11 - 12															
PM HOURS															
12 - 1															
1 - 2															
2 - 3															
3 - 4															
4 - 5															
5 - 6															
6 - 7															
7 - 8															
8 - 9															
9 - 10															
10 - 11															
11 - 12															
AM TOTAL	855	2	86	9.1	13	24	16	5.2	1	2	12	1.5	15.8	5	1021
PM TOTAL															
DAY TOTAL	855	2	86	9.1	13	24	16	5.2	1	2	12	1.5	15.8	5	1021

2-AXLE EQUIVALENT

04-14-08 THRU 04-18-08

AVERAGE WEEKDAY CLASSIFICATION VOLUMES	CARS PICKUPS	BUS MED	SINGLE UNITS 4+	SINGLE UNIT %	DOUBLE UNITS 4-	DOUBLE UNITS 5	DOUBLE UNITS 6+	DOUBLE UNIT %	5-	TRAINS 6	TRAINS 7+	TRAIN %	TRUCK %	CLASS UNKNOWN	TOTAL VEHICLES
AVG WEEKDAY VOLUME	3708	13	310	8.1	43	154	81	6.3	7	7	67	1.8	16.1	14	4434
TOTAL HOURS FOR COUNT			75												5085
2 DAYS															
AVG WEEKDAY VOL	4434		X SEASONAL ADJ. FACTOR	1.0000	= ESTIMATED AVG DAILY TRAFFIC		4434								

0.8720

PEAK HOUR PERCENTAGES: K = 9.49 D = 53.21 T = 13.54
PEAK HOUR LOCATION : VOLUME = 421 DATE: 04/17/08 TIME: 04:00 PM