



Interval 60 min. 15 min.
 Binned(CL/SP) Count(volume)
Lane No 1 2

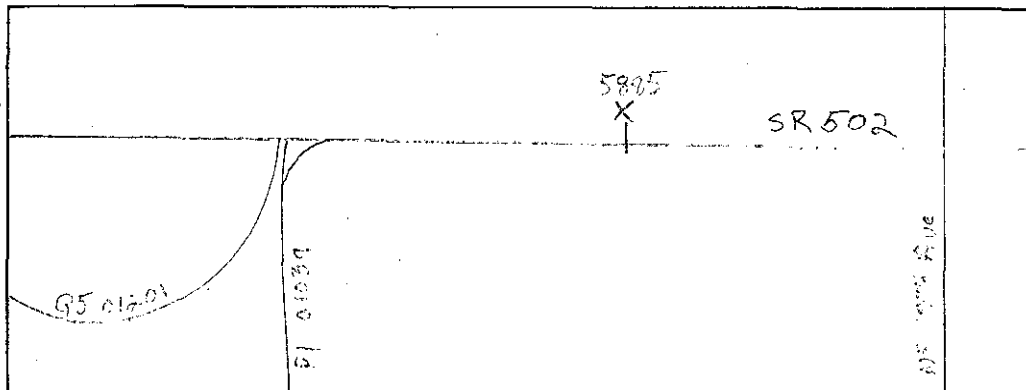
Direction Channel 1 _____
Direction Channel 2 _____
Unique ID# _____

Counter No. 455885 Count ID ATR
SR 502 RRT/RRQ _____ MP 0.35
Leg 2 Direction WB OSID _____

Station Description ON SR 502 E/O SR 5 NB Ramps
~~SR 502 E/O SR 005 NB Off Ramp Wye Conn~~

Date	Day	Time	Comments		
10-31-11	2	10:41	Manual (1) 5 (2) _____ Counter (1) 5 (2) _____	Set OK	CP/RT 6.4v
11-1-11	3	12:25	Manual (1) 30 (2) _____ Counter (1) 30 (2) _____	Check OK	CP/RT 6.7v
11-2-11	4	7:42	Manual (1) 20 (2) _____ Counter (1) 20 (2) _____	Check OK	CP/RT 6.3v
11-3-11	5	11:25	Manual (1) 5 (2) _____ Counter (1) 5 (2) _____	Check OK Quick Check.	CP/RT 6.7v
11-4-11	6	8:33	Manual (1) 1 (2) _____ Counter (1) 1 (2) _____	Pick Up OK	CP/RT 6.3v

Sketch



C. Pottorff
Field Person



Interval 60 min. 15 min.
 Binned(CL/SP) Count(volume)
Lane No 1 2

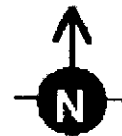
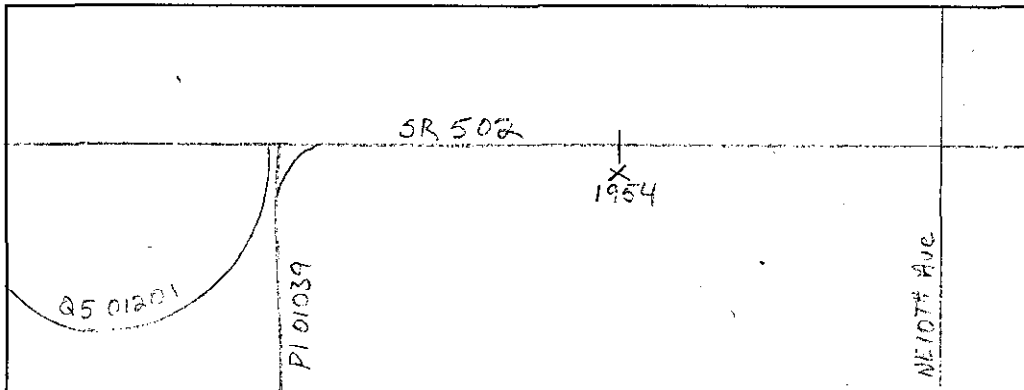
Direction Channel 1 _____
Direction Channel 2 _____
Unique ID# _____

Counter No. 451954 Count ID ATR
SR 502 RRT/RRQ MP 0.35
Leg 2 Direction EB OSID _____

Station Description ON SR 502 E/O SR 005 NB Off Ramp Wye Conn
SR 502 E/O SR 005 NB Ramps

Date	Day	Time	Comments
10-31-11	2	10:40	Manual (1) <u>3</u> (2) _____ Set OK CP/RT 6.5v Counter (1) <u>3</u> (2) _____
11-1-11	3	10:50	Manual (1) <u>27</u> (2) _____ Check OK CP/RT 6.7v Counter (1) <u>27</u> (2) _____
11-2-11	4	7:40	Manual (1) <u>20</u> (2) _____ Check OK CP/RT 6.4v Counter (1) <u>20</u> (2) _____
11-3-11	5	11:24	Manual (1) <u>9</u> (2) _____ Check OK CP/RT 6.7v Counter (1) <u>9</u> (2) _____ Quick Check.
11-4-11	6	8:31	Manual (1) <u>1</u> (2) _____ Pick Up OK CP/RT 6.5v Counter (1) <u>1</u> (2) _____

Sketch



North

C. Poteroff, R. Troupo
Field Person

10/31/11 MONDAY

AM HOURS	PM HOURS	DAILY TOTAL
12	1	13
1	2	3
2	3	5
3	4	7
4	5	9
5	6	11
6	7	13
7	8	15
8	9	17
9	10	19
10	11	21
11	12	23
12	1	25
1	2	27
2	3	29
3	4	31
4	5	33
5	6	35
6	7	37
7	8	39
8	9	41
9	10	43
10	11	45
11	12	47
12	1	49
1	2	51
2	3	53
3	4	55
4	5	57
5	6	59
6	7	61
7	8	63
8	9	65
9	10	67
10	11	69
11	12	71
12	1	73
1	2	75
2	3	77
3	4	79
4	5	81
5	6	83
6	7	85
7	8	87
8	9	89
9	10	91
10	11	93
11	12	95
12	1	97
1	2	99
2	3	101
3	4	103
4	5	105
5	6	107
6	7	109
7	8	111
8	9	113
9	10	115
10	11	117
11	12	119
12	1	121
1	2	123
2	3	125
3	4	127
4	5	129
5	6	131
6	7	133
7	8	135
8	9	137
9	10	139
10	11	141
11	12	143
12	1	145
1	2	147
2	3	149
3	4	151
4	5	153
5	6	155
6	7	157
7	8	159
8	9	161
9	10	163
10	11	165
11	12	167
12	1	169
1	2	171
2	3	173
3	4	175
4	5	177
5	6	179
6	7	181
7	8	183
8	9	185
9	10	187
10	11	189
11	12	191
12	1	193
1	2	195
2	3	197
3	4	199
4	5	201
5	6	203
6	7	205
7	8	207
8	9	209
9	10	211
10	11	213
11	12	215
12	1	217
1	2	219
2	3	221
3	4	223
4	5	225
5	6	227
6	7	229
7	8	231
8	9	233
9	10	235
10	11	237
11	12	239
12	1	241
1	2	243
2	3	245
3	4	247
4	5	249
5	6	251
6	7	253
7	8	255
8	9	257
9	10	259
10	11	261
11	12	263
12	1	265
1	2	267
2	3	269
3	4	271
4	5	273
5	6	275
6	7	277
7	8	279
8	9	281
9	10	283
10	11	285
11	12	287
12	1	289
1	2	291
2	3	293
3	4	295
4	5	297
5	6	299
6	7	301
7	8	303
8	9	305
9	10	307
10	11	309
11	12	311
12	1	313
1	2	315
2	3	317
3	4	319
4	5	321
5	6	323
6	7	325
7	8	327
8	9	329
9	10	331
10	11	333
11	12	335
12	1	337
1	2	339
2	3	341
3	4	343
4	5	345
5	6	347
6	7	349
7	8	351
8	9	353
9	10	355
10	11	357
11	12	359
12	1	361
1	2	363
2	3	365
3	4	367
4	5	369
5	6	371
6	7	373
7	8	375
8	9	377
9	10	379
10	11	381
11	12	383
12	1	385
1	2	387
2	3	389
3	4	391
4	5	393
5	6	395
6	7	397
7	8	399
8	9	401
9	10	403
10	11	405
11	12	407
12	1	409
1	2	411
2	3	413
3	4	415
4	5	417
5	6	419
6	7	421
7	8	423
8	9	425
9	10	427
10	11	429
11	12	431
12	1	433
1	2	435
2	3	437
3	4	439
4	5	441
5	6	443
6	7	445
7	8	447
8	9	449
9	10	451
10	11	453
11	12	455
12	1	457
1	2	459
2	3	461
3	4	463
4	5	465
5	6	467
6	7	469
7	8	471
8	9	473
9	10	475
10	11	477
11	12	479
12	1	481
1	2	483
2	3	485
3	4	487
4	5	489
5	6	491
6	7	493
7	8	495
8	9	497
9	10	499
10	11	501
11	12	503
12	1	505
1	2	507
2	3	509
3	4	511
4	5	513
5	6	515
6	7	517
7	8	519
8	9	521
9	10	523
10	11	525
11	12	527
12	1	529
1	2	531
2	3	533
3	4	535
4	5	537
5	6	539
6	7	541
7	8	543
8	9	545
9	10	547
10	11	549
11	12	551
12	1	553
1	2	555
2	3	557
3	4	559
4	5	561
5	6	563
6	7	565
7	8	567
8	9	569
9	10	571
10	11	573
11	12	575
12	1	577
1	2	579
2	3	581
3	4	583
4	5	585
5	6	587
6	7	589
7	8	591
8	9	593
9	10	595
10	11	597
11	12	599
12	1	601
1	2	603
2	3	605
3	4	607
4	5	609
5	6	611
6	7	613
7	8	615
8	9	617
9	10	619
10	11	621
11	12	623
12	1	625
1	2	627
2	3	629
3	4	631
4	5	633
5	6	635
6	7	637
7	8	639
8	9	641
9	10	643
10	11	645
11	12	647
12	1	649
1	2	651
2	3	653
3	4	655
4	5	657
5	6	659
6	7	661
7	8	663
8	9	665
9	10	667
10	11	669
11	12	671
12	1	673
1	2	675
2	3	677
3	4	679
4	5	681
5	6	683
6	7	685
7	8	687
8	9	689
9	10	691
10	11	693
11	12	695
12	1	697
1	2	699
2	3	701
3	4	703
4	5	705
5	6	707
6	7	709
7	8	711
8	9	713
9	10	715
10	11	717
11	12	719
12	1	721
1	2	723
2	3	725
3	4	727
4	5	729
5	6	731
6	7	733
7	8	735
8	9	737
9	10	739
10	11	741
11	12	743
12	1	745
1	2	747
2	3	749
3	4	751
4	5	753
5	6	755
6	7	757
7	8	759
8	9	761
9	10	763
10	11	765
11	12	767
12	1	769
1	2	771
2	3	773
3	4	775
4	5	777
5	6	779
6	7	781
7	8	783
8	9	785
9	10	787
10	11	789
11	12	791
12	1	793
1	2	795
2	3	797
3	4	799
4	5	801
5	6	803
6	7	805
7	8	807
8	9	809
9	10	811
10	11	813
11	12	815
12	1	817
1	2	819
2	3	821
3	4	823
4	5	825
5	6	827
6	7	829
7	8	831
8	9	833
9	10	835
10	11	837
11	12	839
12	1	841
1	2	843
2	3	845
3	4	847
4	5	849
5	6	851
6	7	853
7	8	855
8	9	857
9	10	859
10	11	861
11	12	863
12	1	865
1	2	867
2	3	869
3	4	871
4	5	873
5	6	875
6	7	877
7	8	879
8	9	881
9	10	883
10	11	885
11	12	887
12	1	889
1	2	891
2	3	893
3	4	895
4	5	897
5	6	899
6	7	901
7	8	903
8	9	905
9	10	907
10	11	909
11	12	911
12	1	913
1	2	915
2	3	917
3	4	919
4	5	921
5	6	923
6	7	925
7	8	927
8	9	929
9	10	931
10	11	933
11	12	935
12	1	937
1	2	939
2	3	941
3	4	943
4	5	945
5	6	947
6	7	949
7	8	951

TRIP SYSTEM
15 MINUTE TRAFFIC COUNT SUMMARY

SR 502 MP 000.35 OFF SYSTEM ID. LEG 2 DIRECTION OF TRAFFIC WESTBOUND LANE ALL OF

COUNT IDENTIFIER	ATR	COUNTER NUMBER	455885	DESCRIPTION: ON SR 502 E/O SR 5 NB RAMP
11/03/11 THURSDAY				
12	1	2	3	4
1	2	3	4	5
2	3	4	5	6
3	4	5	6	7
4	5	6	7	8
5	6	7	8	9
6	7	8	9	10
7	8	9	10	11
8	9	10	11	12
9	10	11	12	TOTAL
10	11	12	1	
11	12	1	2	
12	1	2	3	
1	2	3	4	
2	3	4	5	
3	4	5	6	
4	5	6	7	
5	6	7	8	
6	7	8	9	
7	8	9	10	
8	9	10	11	
9	10	11	12	
10	11	12	1	
11	12	1	2	
12	1	2	3	
1	2	3	4	
2	3	4	5	
3	4	5	6	
4	5	6	7	
5	6	7	8	
6	7	8	9	
7	8	9	10	
8	9	10	11	
9	10	11	12	
10	11	12	1	
11	12	1	2	
12	1	2	3	
1	2	3	4	
2	3	4	5	
3	4	5	6	
4	5	6	7	
5	6	7	8	
6	7	8	9	
7	8	9	10	
8	9	10	11	
9	10	11	12	
10	11	12	1	
11	12	1	2	
12	1	2	3	
1	2	3	4	
2	3	4	5	
3	4	5	6	
4	5	6	7	
5	6	7	8	
6	7	8	9	
7	8	9	10	
8	9	10	11	
9	10	11	12	
10	11	12	1	
11	12	1	2	
12	1	2	3	
1	2	3	4	
2	3	4	5	
3	4	5	6	
4	5	6	7	
5	6	7	8	
6	7	8	9	
7	8	9	10	
8	9	10	11	
9	10	11	12	
10	11	12	1	
11	12	1	2	
12	1	2	3	
1	2	3	4	
2	3	4	5	
3	4	5	6	
4	5	6	7	
5	6	7	8	
6	7	8	9	
7	8	9	10	
8	9	10	11	
9	10	11	12	
10	11	12	1	
11	12	1	2	
12	1	2	3	
1	2	3	4	
2	3	4	5	
3	4	5	6	
4	5	6	7	
5	6	7	8	
6	7	8	9	
7	8	9	10	
8	9	10	11	
9	10	11	12	
10	11	12	1	
11	12	1	2	
12	1	2	3	
1	2	3	4	
2	3	4	5	
3	4	5	6	
4	5	6	7	
5	6	7	8	
6	7	8	9	
7	8	9	10	
8	9	10	11	
9	10	11	12	
10	11	12	1	
11	12	1	2	
12	1	2	3	
1	2	3	4	
2	3	4	5	
3	4	5	6	
4	5	6	7	
5	6	7	8	
6	7	8	9	
7	8	9	10	
8	9	10	11	
9	10	11	12	
10	11	12	1	
11	12	1	2	
12	1	2	3	
1	2	3	4	
2	3	4	5	
3	4	5	6	
4	5	6	7	
5	6	7	8	
6	7	8	9	
7	8	9	10	
8	9	10	11	
9	10	11	12	
10	11	12	1	
11	12	1	2	
12	1	2	3	
1	2	3	4	
2	3	4	5	
3	4	5	6	
4	5	6	7	
5	6	7	8	
6	7	8	9	
7	8	9	10	
8	9	10	11	
9	10	11	12	
10	11	12	1	
11	12	1	2	
12	1	2	3	
1	2	3	4	
2	3	4	5	
3	4	5	6	
4	5	6	7	
5	6	7	8	
6	7	8	9	
7	8	9	10	
8	9	10	11	
9	10	11	12	
10	11	12	1	
11	12	1	2	
12	1	2	3	
1	2	3	4	
2	3	4	5	
3	4	5	6	
4	5	6	7	
5	6	7	8	
6	7	8	9	
7	8	9	10	
8	9	10	11	
9	10	11	12	
10	11	12	1	
11	12	1	2	
12	1	2	3	
1	2	3	4	
2	3	4	5	
3	4	5	6	
4	5	6	7	
5	6	7	8	
6	7	8	9	
7	8	9	10	
8	9	10	11	
9	10	11	12	
10	11	12	1	
11	12	1	2	
12	1	2	3	
1	2	3	4	
2	3	4	5	
3	4	5	6	
4	5	6	7	
5	6	7	8	
6	7	8	9	
7	8	9	10	
8	9	10	11	
9	10	11	12	
10	11	12	1	
11	12	1	2	
12	1	2	3	
1	2	3	4	
2	3	4	5	
3	4	5	6	
4	5	6	7	
5	6	7	8	
6	7	8	9	
7	8	9	10	
8	9	10	11	
9	10	11	12	
10	11	12	1	
11	12	1	2	
12	1	2	3	
1	2	3	4	
2	3	4	5	
3	4	5	6	
4	5	6	7	
5	6	7	8	
6	7	8	9	
7	8	9	10	
8	9	10	11	
9	10	11	12	
10	11	12	1	
11	12	1	2	
12	1	2	3	
1	2	3	4	
2	3	4	5	
3	4	5	6	
4	5	6	7	
5	6	7	8	
6	7	8	9	
7	8	9	10	
8	9	10	11	
9	10	11	12	
10	11	12	1	
11	12	1	2	
12	1	2	3	
1	2	3	4	
2	3	4	5	
3	4	5	6	
4	5	6	7	
5	6	7	8	
6	7	8	9	
7	8	9	10	
8	9	10	11	
9	10	11	12	
10	11	12	1	
11	12	1	2	
12	1	2	3	
1	2	3	4	
2	3	4	5	
3	4	5	6	
4	5	6	7	
5	6	7	8	
6	7	8	9	
7	8	9	10	
8	9	10	11	
9	10	11	12	
10	11	12	1	
11	12	1	2	
12	1	2	3	
1	2	3	4	
2	3	4	5	
3	4	5	6	
4	5	6	7	
5	6	7	8	
6	7	8	9	
7	8	9	10	
8	9	10	11	
9	10	11	12	
10	11	12	1	
11	12	1	2	
12	1	2	3	
1	2	3	4	
2	3	4	5	
3	4	5	6	
4	5	6	7	
5	6	7	8	
6	7	8	9	
7	8	9	10	
8	9	10	11	
9	10	11	12	
10	11	12	1	
11	12	1	2	
12	1	2	3	
1	2	3	4	
2	3	4	5	
3	4	5	6	
4	5	6	7	
5	6	7	8	
6	7	8	9	
7	8	9	10	
8	9	10	11	
9	10	11	12	
10	11	12	1	
11	12	1	2	
12	1	2	3	
1	2	3	4	
2	3			

STATE OF WASHINGTON - DEPARTMENT OF TRANSPORTATION
TRIP SYSTEM
15 MINUTE TRAFFIC COUNT SUMMARY

SR 502 MP 000.35 OFF SYSTEM ID. LEG 2 DIRECTION OF TRAFFIC BOTH WAYS LANE ALL OF
COUNT IDENTIFIER ATR COUNTER NUMBER 451954 DESCRIPTION: ON SR 502 E/O SR 5 NB RAMP

10/31/11 MONDAY	AM HOURS												PM HOURS												DAILY TOTAL
	1	2	3	4	5	6	7	8	9	10	11	12	1	2	3	4	5	6	7	8	9	10	11	12	
12	1	2	3	4	5	6	7	8	9	10	11	12	1	2	3	4	5	6	7	8	9	10	11	12	10709
TOT	189	181	206	207	266	339	320	293	169	122	182	121	189	800	844	851	982	1206	1306	1267	905	531	659	576	989
	AM PEAK HOUR 1045 TO 1145 VOLUME 808												PM PEAK HOUR 0345 TO 0445 VOLUME 1325												AM TOTAL 989
																									PM TOTAL 9720

11/01/11 TUESDAY	AM HOURS												PM HOURS												DAILY TOTAL
	1	2	3	4	5	6	7	8	9	10	11	12	1	2	3	4	5	6	7	8	9	10	11	12	
12	1	2	3	4	5	6	7	8	9	10	11	12	1	2	3	4	5	6	7	8	9	10	11	12	17430
TOT	188	158	146	205	366	592	1079	1289	1007	793	802	787	824	892	895	1132	1256	1511	1194	683	586	504	311	230	
	AM PEAK HOUR 0700 TO 0800 VOLUME 1289												PM PEAK HOUR 0515 TO 0615 VOLUME 1513												AM TOTAL 7412
																									PM TOTAL 10018

11/02/11 WEDNESDAY	AM HOURS												PM HOURS												DAILY TOTAL
	1	2	3	4	5	6	7	8	9	10	11	12	1	2	3	4	5	6	7	8	9	10	11	12	
12	1	2	3	4	5	6	7	8	9	10	11	12	1	2	3	4	5	6	7	8	9	10	11	12	16950
TOT	183	159	158	173	294	574	1054	1191	973	864	771	754	840	884	979	1236	1318	1339	996	640	551	486	297	236	
	AM PEAK HOUR 0645 TO 0745 VOLUME 1202												PM PEAK HOUR 0430 TO 0530 VOLUME 1432												AM TOTAL 7148
																									PM TOTAL 9802

STATE OF WASHINGTON - DEPARTMENT OF TRANSPORTATION
TRIP SYSTEM
15 MINUTE TRAFFIC COUNT SUMMARY

SR 502 MP 000.35 OFF SYSTEM ID. LEG 2 DIRECTION OF TRAFFIC BOTH WAYS LANE ALL OF

COUNT IDENTIFIER ATR COUNTER NUMBER 451954 DESCRIPTION: ON SR 502 E/O SR 5 NB RAMPS

11/03/11 THURSDAY	AM HOURS					PM HOURS					DAILY TOTAL													
	12	1	2	3	4	5	6	7	8	9														
12	1	2	3	4	5	6	7	8	9	10	11	12												
58	35	36	43	61	104	211	289	273	206	198	172	230	203	226	284	281	347	273	185	156	167	84	67	
67	44	33	30	61	130	274	322	254	217	187	198	217	252	229	291	298	390	285	202	147	148	100	78	
33	30	40	39	95	182	278	302	265	241	214	202	209	214	265	302	374	344	260	138	173	145	59	50	
42	39	38	56	102	144	270	286	253	225	179	231	173	260	259	330	337	500	242	142	127	88	75	55	
TOT	200	148	147	168	319	560	1033	1199	1045	889	778	803	829	929	979	1207	1290	1060	667	603	548	318	250	17350

AM PEAK HOUR 0700 TO 0800 VOLUME 1199
PM PEAK HOUR 0430 TO 0530 VOLUME 1448

AM TOTAL 7289
PM TOTAL 10061

11/04/11 FRIDAY	AM HOURS					PM HOURS					DAILY TOTAL													
	12	1	2	3	4	5	6	7	8	9														
12	1	2	3	4	5	6	7	8	9	10	11	12												
53	35	36	39	60	109	188	248	255																
49	39	23	46	64	122	235	305	229																
56	38	53	38	92	148	296	301																	
45	28	39	38	83	201	221	313																	
TOT	203	140	151	161	299	580	940	1167	484															4125

AM PEAK HOUR 0715 TO 0815 VOLUME 1174
PM PEAK HOUR 0000 TO 0000 VOLUME 0

AM TOTAL 4125
PM TOTAL 0

10/31/11 THRU 11/04/11
TOTAL HOURS FOR COUNT 92

3 DAYS
 AVG WEEKDAY VOL 17243 X SEASONAL ADJ. FACTOR 1.1100 = 19140 X AXLE CORR FACTOR 0.9805 = ESTIMATED AVG DAILY TRAFFIC 18767
 FACTOR GROUP CB-02
 FACTOR GROUP GR-B2
 PEAK HOUR PERCENTAGES: K = 8.77 D = 66.36
 PEAK HOUR LOCATION : VOLUME = 1513 DATE: 11/01/11 TIME: 05:15 PM

Note: Count High

15

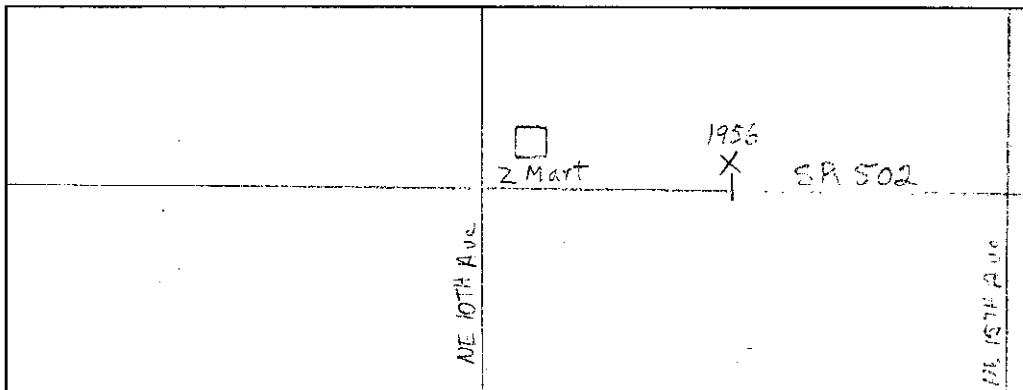
Interval <input type="checkbox"/> 60 min.	<input checked="" type="checkbox"/> 15 min.
<input type="checkbox"/> Binned(CL/SP)	<input checked="" type="checkbox"/> Count(volume)
Lane No <input type="checkbox"/> 1 <input type="checkbox"/> 2	
Direction Channel 1 _____	
Direction Channel 2 _____	
Unique ID# _____	

Counter No. <u>451956</u>	Count ID <u>HPMS</u>
SR <u>502 RRT/RRQ</u>	MP <u>2.05</u>
Leg <u>2</u>	Direction <u>WB</u> OSID _____

Station Description _ ON SR 502 E/O NE 10th Ave

Date	Day	Time	Comments
10-31-11	2	11:00	Manual (1) 1 (2) Set OK CP/RT 6.5v Counter (1) 1 (2)
11-1-11	3	12:18	Manual (1) 30 (2) Check OK CP/RT 6.7v Counter (1) 29 (2) SP=1
11-2-11	4	9:02	Manual (1) 24 (2) Check OK CP/RT 6.5v Counter (1) 24 (2)
11-3-11	5	12:15	Manual (1) 5 (2) Check OK CP/RT 6.8v Counter (1) 5 (2) Quick Check. Water in tube. Fixed @ 12:15.
11-4-11	6	9:27	Manual (1) 1 (2) Pick Up OK CP/RT 6.5v Counter (1) 1 (2)

Sketch



C. Pottloff R. Troupe
Field Person

Interval 60 min. 15 min.
 Binned(CL/SP) Count(volume)
Lane No 1 2

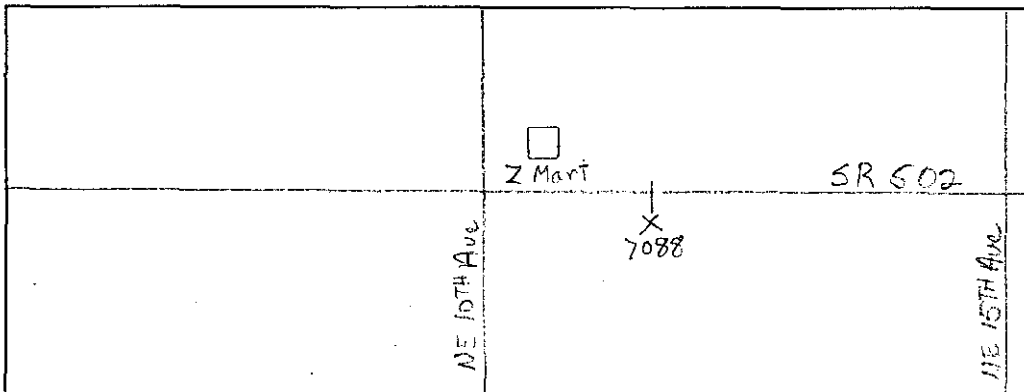
Direction Channel 1 _____
Direction Channel 2 _____
Unique ID# _____

Counter No. 457088 Count ID HPMS
SR 502 RRT/RRQ _____ MP 2.05
Leg 2 Direction EB OSID _____

Station Description _ ON SR 502 E/O NE 10th Ave

Date	Day	Time	Comments		
10-31-11	2	10:55	Manual (1) <u>2</u> (2) _____ Counter (1) <u>2</u> (2) _____	Set OK	CP/RT 6.5v
11-1-11	3	10:57	Manual (1) <u>34</u> (2) _____ Counter (1) <u>34</u> (2) _____	Check OK	CP/RT 6.7v
11-2-11	4	7:46	Manual (1) <u>14</u> (2) _____ Counter (1) <u>13</u> (2) _____	Check OK SP=1	CP/RT 6.4v
11-3-11	5	11:35	Manual (1) <u>10</u> (2) _____ Counter (1) <u>10</u> (2) _____	Check OK Quick Check.	CP/RT 6.7v
11-4-11	6	8:36	Manual (1) <u>1</u> (2) _____ Counter (1) <u>1</u> (2) _____	Pick Up OK	CP/RT 6.4v

Sketch



C. Pottorff, R. Troupe
Field Person

SR 502 MP 002.05 OFF SYSTEM ID. LEG 2 DIRECTION OF TRAFFIC WESTBOUND LANE ALL OF

COUNT IDENTIFIER HPMS COUNTER NUMBER 451956 DESCRIPTION: ON SR 502 E/O NE 10TH AVE

10/31/11	MONDAY	AM HOURS												PM HOURS												DAILY TOTAL											
COUNT	IDENTIFIER	1	2	3	4	5	6	7	8	9	10	11	12	1	2	3	4	5	6	7	8	9	10	11	12	TOTAL											
12	1	2	3	4	5	6	7	8	9	10	11	12	1	2	3	4	5	6	7	8	9	10	11	12	4148												
1	2	3	4	5	6	7	8	9	10	11	12	1	2	3	4	5	6	7	8	9	10	11	12														
		AM PEAK HOUR 0000 TO 0000 VOLUME 315												PM PEAK HOUR 0315 TO 0415 VOLUME 476												AM TOTAL 315											
		PM PEAK HOUR 0315 TO 0415 VOLUME 476																								PM TOTAL 3833											
TOT		315												389												425	400	451	412	403	339	243	293	238	136	104	4148

11/01/11	TUESDAY	AM HOURS												PM HOURS												DAILY TOTAL														
COUNT	IDENTIFIER	1	2	3	4	5	6	7	8	9	10	11	12	1	2	3	4	5	6	7	8	9	10	11	12	TOTAL														
12	1	2	3	4	5	6	7	8	9	10	11	12	1	2	3	4	5	6	7	8	9	10	11	12	8487															
1	2	3	4	5	6	7	8	9	10	11	12	1	2	3	4	5	6	7	8	9	10	11	12																	
		AM PEAK HOUR 0630 TO 0730 VOLUME 829												PM PEAK HOUR 0500 TO 0600 VOLUME 530												AM TOTAL 4581														
		PM PEAK HOUR 0500 TO 0600 VOLUME 530																								PM TOTAL 3906														
TOT		594												479												489	434	384	414	423	462	422	530	363	268	235	208	120	77	8487

11/02/11	WEDNESDAY	AM HOURS												PM HOURS												DAILY TOTAL														
COUNT	IDENTIFIER	1	2	3	4	5	6	7	8	9	10	11	12	1	2	3	4	5	6	7	8	9	10	11	12	TOTAL														
12	1	2	3	4	5	6	7	8	9	10	11	12	1	2	3	4	5	6	7	8	9	10	11	12	7769															
1	2	3	4	5	6	7	8	9	10	11	12	1	2	3	4	5	6	7	8	9	10	11	12																	
		AM PEAK HOUR 0630 TO 0730 VOLUME 832												PM PEAK HOUR 0245 TO 0345 VOLUME 478												AM TOTAL 4536														
		PM PEAK HOUR 0245 TO 0345 VOLUME 478																								PM TOTAL 3231														
TOT		612												502												444	395	443	467	439	473	433	436	321	171	44	5	1	1	7769

AM TOTAL 4536
 PM TOTAL 3231
 TOTAL 7769

SR 502 MP 002.05 OFF SYSTEM ID. LEG 2 DIRECTION OF TRAFFIC WESTBOUND LANE ALL OF
COUNT IDENTIFIER HPMS COUNTER NUMBER 451956 DESCRIPTION: ON SR 502 E/O NE 10TH AVE

11/03/11 THURSDAY		AN HOURS												PM HOURS												AM TOTAL	PM TOTAL	DAILY TOTAL
COUNT	IDENTIFIER	1	2	3	4	5	6	7	8	9	10	11	12	1	2	3	4	5	6	7	8	9	10	11	12			
12	1	2	3	4	5	6	7	8	9	10	11	12	1	2	3	4	5	6	7	8	9	10	11	12				
1	2	3	4	5	6	7	8	9	10	11	12	1	2	3	4	5	6	7	8	9	10	11	12					
2	3	4	5	6	7	8	9	10	11	12	1	2	3	4	5	6	7	8	9	10	11	12						
3	4	5	6	7	8	9	10	11	12	1	2	3	4	5	6	7	8	9	10	11	12							
4	5	6	7	8	9	10	11	12	1	2	3	4	5	6	7	8	9	10	11	12								
5	6	7	8	9	10	11	12	1	2	3	4	5	6	7	8	9	10	11	12									
6	7	8	9	10	11	12	1	2	3	4	5	6	7	8	9	10	11	12										
7	8	9	10	11	12	1	2	3	4	5	6	7	8	9	10	11	12											
8	9	10	11	12	1	2	3	4	5	6	7	8	9	10	11	12												
9	10	11	12	1	2	3	4	5	6	7	8	9	10	11	12													
10	11	12	1	2	3	4	5	6	7	8	9	10	11	12														
11	12	1	2	3	4	5	6	7	8	9	10	11	12															
12	1	2	3	4	5	6	7	8	9	10	11	12																
TOT	2	8	4	7	9	4	2	7	17	12	11	11	294	478	475	441	486	441	375	235	257	206	122	86	3990			

WORKER IN TUBE

11/04/11 FRIDAY		AM HOURS												PM HOURS												AM TOTAL	PM TOTAL	DAILY TOTAL
COUNT	IDENTIFIER	1	2	3	4	5	6	7	8	9	10	11	12	1	2	3	4	5	6	7	8	9	10	11	12			
12	1	2	3	4	5	6	7	8	9	10	11	12	1	2	3	4	5	6	7	8	9	10	11	12				
1	2	3	4	5	6	7	8	9	10	11	12	1	2	3	4	5	6	7	8	9	10	11	12					
2	3	4	5	6	7	8	9	10	11	12	1	2	3	4	5	6	7	8	9	10	11	12						
3	4	5	6	7	8	9	10	11	12	1	2	3	4	5	6	7	8	9	10	11	12							
4	5	6	7	8	9	10	11	12	1	2	3	4	5	6	7	8	9	10	11	12								
5	6	7	8	9	10	11	12	1	2	3	4	5	6	7	8	9	10	11	12									
6	7	8	9	10	11	12	1	2	3	4	5	6	7	8	9	10	11	12										
7	8	9	10	11	12	1	2	3	4	5	6	7	8	9	10	11	12											
8	9	10	11	12	1	2	3	4	5	6	7	8	9	10	11	12												
9	10	11	12	1	2	3	4	5	6	7	8	9	10	11	12													
10	11	12	1	2	3	4	5	6	7	8	9	10	11	12														
11	12	1	2	3	4	5	6	7	8	9	10	11	12															
12	1	2	3	4	5	6	7	8	9	10	11	12																
TOT	76	71	83	98	212	483	707	748	573	129														3180				

10/31/11 THRU 11/04/11
TOTAL HOURS FOR COUNT 93

2.4 DAYS
AVG WEEKDAY VOL 6749 X SEASONAL ADJ. FACTOR 1.1100 = 7491 X AXLE CORR FACTOR 0.9805 = ESTIMATED AVG DAILY TRAFFIC 7345

8428

9355

9173

AM TOTAL 94
PM TOTAL 3896

STATE OF WASHINGTON - DEPARTMENT OF TRANSPORTATION
TRIPSSYSTEM
15 MINUTE TRAFFIC COUNT SUMMARY

SR 502 MP 002.05 OFF SYSTEM ID. LEG 2 DIRECTION OF TRAFFIC EASTBOUND LANE ALL OF

COUNT IDENTIFIER HPMS COUNTER NUMBER 457088 DESCRIPTION: ON SR 502 E/O NE 10TH AVE

11/03/11 THURSDAY		AM HOURS												PM HOURS												DAILY TOTAL
12	1	2	3	4	5	6	7	8	9	10	11	12	1	2	3	4	5	6	7	8	9	10	11	12	TOTAL	
12	1	2	3	4	5	6	7	8	9	10	11	12	1	2	3	4	5	6	7	8	9	10	11	12	119	
TOT	114	78	62	67	58	72	161	348	345	307	312	387	443	478	485	731	785	860	670	418	342	331	197	163	8214	

AM PEAK HOUR 1100 TO 1200 VOLUME 387
PM PEAK HOUR 0430 TO 0530 VOLUME 877
AM TOTAL 2311
PM TOTAL 5903

11/04/11 FRIDAY		AM HOURS												PM HOURS												DAILY TOTAL
12	1	2	3	4	5	6	7	8	9	10	11	12	1	2	3	4	5	6	7	8	9	10	11	12	TOTAL	
12	1	2	3	4	5	6	7	8	9	10	11	12	1	2	3	4	5	6	7	8	9	10	11	12	119	
TOT	119	80	65	70	74	61	151	336	163																1119	

10/31/11 THRU 11/04/11
TOTAL HOURS FOR COUNT 92
AM PEAK HOUR 0715 TO 0815 VOLUME 360
PM PEAK HOUR 0000 TO 0000 VOLUME 0
AM TOTAL 1119
PM TOTAL 0

3 DAYS
AVG WEEKDAY VOL 8127 X SEASONAL ADJ. FACTOR 1.1100 = 9021 X AXLE CORR FACTOR 0.9805 = ESTIMATED AVG DAILY TRAFFIC 8845



SR 502 MP 002.05 OFF SYSTEM ID. LEG 2 DIRECTION OF TRAFFIC BOTH WAYS LANE ALL OF
COUNT IDENTIFIER HPMS COUNTER NUMBER 457088 DESCRIPTION: ON SR 502 E/O NE 10TH AVE

COUNT	10/31/11 MONDAY												DAILY TOTAL												
	AM HOURS						PM HOURS																		
	1	2	3	4	5	6	7	8	9	10	11	12	1	2	3	4	5	6	7	8	9	10	11	12	
00-15																									
15-30																									
30-45																									
45-00																									
TOT	1	2	3	4	5	6	7	8	9	10	11	12	1	2	3	4	5	6	7	8	9	10	11	12	
	179	201	238	246	299	294	336	321	257	141	161	137	141	158	153	90	65	61							
	222	194	228	213	307	291	274	231	122	122	166	150	122	166	150	76	68								
	189	213	203	269	325	304	279	161	129	174	127	84	49												
	590	799	876	948	1182	1251	1210	901	542	659	567	346	243												
	AM PEAK HOUR 0000 TO 0000 VOLUME 0												AM PEAK HOUR 0315 TO 0415 VOLUME 1293												590
	PM PEAK HOUR 0000 TO 0000 VOLUME 0												PM PEAK HOUR 0315 TO 0415 VOLUME 1293												9528

COUNT	11/01/11 TUESDAY												DAILY TOTAL												
	AM HOURS						PM HOURS																		
	1	2	3	4	5	6	7	8	9	10	11	12	1	2	3	4	5	6	7	8	9	10	11	12	
00-15																									
15-30																									
30-45																									
45-00																									
TOT	12	1	2	3	4	5	6	7	8	9	10	11	12	1	2	3	4	5	6	7	8	9	10	11	
	198	154	134	190	310	538	961	1151	942	725	822	811	812	908	930	1117	1213	1444	1078	686	599	479	305	222	
	AM PEAK HOUR 0700 TO 0800 VOLUME 1151												AM PEAK HOUR 0500 TO 0600 VOLUME 1444												6936
	PM PEAK HOUR 0500 TO 0600 VOLUME 1444												PM PEAK HOUR 0500 TO 0600 VOLUME 1444												9793

COUNT	11/02/11 WEDNESDAY												DAILY TOTAL												
	AM HOURS						PM HOURS																		
	1	2	3	4	5	6	7	8	9	10	11	12	1	2	3	4	5	6	7	8	9	10	11	12	
00-15																									
15-30																									
30-45																									
45-00																									
TOT	12	1	2	3	4	5	6	7	8	9	10	11	12	1	2	3	4	5	6	7	8	9	10	11	
	164	151	147	164	287	536	946	1112	932	832	728	749	852	913	983	1177	1253	1260	970	561	358	282	190	146	
	AM PEAK HOUR 0645 TO 0745 VOLUME 1113												AM PEAK HOUR 0430 TO 0530 VOLUME 1331												6768
	PM PEAK HOUR 0430 TO 0530 VOLUME 1331												PM PEAK HOUR 0430 TO 0530 VOLUME 1331												8965

Handwritten notes:
Liber
IN folder LVR
6768
8965

SR 502 MP 002.05 OFF SYSTEM ID. LEG 2 DIRECTION OF TRAFFIC BOTH WAYS LANE ALL OF

COUNT IDENTIFIER	HPMS	COUNTER NUMBER	457088	DESCRIPTION: ON SR 502 E/O NE 10TH AVE
11/03/11 THURSDAY				
00-15	12	1	2	3
15-30	1	2	3	4
30-45	2	3	4	5
45-00	3	4	5	6
TOT	116	86	66	74
AM HOURS				
	5	6	7	8
	9	10	11	12
PM HOURS				
	1	2	3	4
	5	6	7	8
	9	10	11	12
AM PEAK HOUR 1100 TO 1200 VOLUME	362	319	323	398
PM PEAK HOUR 0430 TO 0530 VOLUME	956	960	1172	1271
AM TOTAL	398	537	319	249
PM TOTAL	1383	9799	2405	12204

Water in the WB

COUNT IDENTIFIER	HPMS	COUNTER NUMBER	457088	DESCRIPTION: ON SR 502 E/O NE 10TH AVE
11/04/11 FRIDAY				
00-15	12	1	2	3
15-30	1	2	3	4
30-45	2	3	4	5
45-00	3	4	5	6
TOT	195	151	148	168
AM HOURS				
	5	6	7	8
	9	10	11	12
PM HOURS				
	1	2	3	4
	5	6	7	8
	9	10	11	12
AM PEAK HOUR 0715 TO 0815 VOLUME	544	858	1084	449
PM PEAK HOUR 0000 TO 0000 VOLUME	960	1172	1271	1045
AM TOTAL	1097	537	319	249
PM TOTAL	0	9799	2405	12204

10/31/11 THRU 11/04/11
TOTAL HOURS FOR COUNT 92

23 DAYS 16501 FACTOR GROUP CB-02 18316 FACTOR GROUP GR-B2 17959
 AVG WEEKDAY VOL 14875 X SEASONAL ADJ. FACTOR 1.1100 = 16511 X AXLE CORR FACTOR 0.9805 = ESTIMATED AVG DAILY TRAFFIC 16189

PEAK HOUR PERCENTAGES: K = 9.71 D = 63.30
 PEAK HOUR LOCATION : VOLUME = 1444 DATE: 11/01/11 TIME: 05:00 PM

Note: Count High